

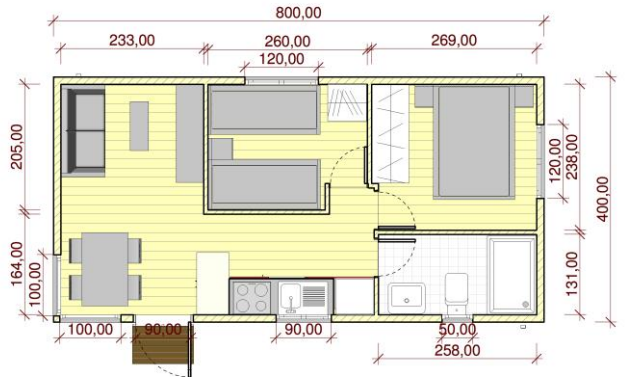
1

INCLUDED IN STANDARD MODEL PRICE

- 1 module (8mx4m)
- Completely Furnished – per floor plan – see technical specifications for details*
- Delivery and Installation in continental Portugal
- VAT
- 150L Solar Powered Water Heater
- Wood cladding for chassis
- Wheeled Chassis
- 2,5 meter ceiling height

- **Living Room/Dining Room**
 - Sofa
 - Coffee Table
 - Custom TV Table
 - Dining Room Table w/4 chairs
 - Pre-installation for Air Conditioning
- **Kitchenette**
 - Upper/Lower cabinet
 - Small counter for eating
 - Electric hob/Exhaust hood/Oven (cooker)
 - 305L refrigerator
- **2 Bedrooms**
 - Double beds/ single beds (per floorplan)
 - Night stands
 - Built-in Wardrobe
 - Pre-installation for Air Conditioning
- **1 WC**
 - Glass enclosed shower
 - Vanity w/mirror
 - Stylish toilet
- **Flooring**
 - Laminate floor throughout
 - Ceramic tile in WCs
- **Windows & Doors per floorplan**
 - 90cm entrance door (in frosted glass)
 - (2) 120x100 sliding Windows w/ electric shutters
 - (1) 50x100 tilting Window
 - (1) 90x100 sliding Window w/electric shutters
 - (2) 100x150 fixed windows

** Standard items included in our price. Other materials, colours, equipment and different options may be available for the same price, however, in these instances we will provide you with a quotation.
Standard Model Price subject to change without notice.*



2

NOT INCLUDED IN STANDARD MODEL PRICE BUT NECESSARY FOR PROJECT COMPLETION**

- Site/Land Preparation
 - Clearing of Land
 - Compacting and Levelling of Land for installation of the house
 - Trench digging for external networks/connection to external networks
 - Burying of tanks for water deposits and septic systems
- Installation of External Electricity Network
- Installation of External Water Network
- Installation of External Sewage Network
- Crane Unloading Service

**** KITUR CAN MANAGE THESE ASPECTS OF THE PROJECT FOR YOU. ALL PRICING FOR THESE ITEMS ARE QUOTED ON A CASE BY CASE BASIS, AS THE COSTS OF THESE ITEMS ARE SOLEY DEPENDENT ON THE LAND WHERE THE HOUSE WILL BE INSTALLED.**

3

ADDITIONAL FEATURE UPGRADES NOT INCLUDED in STANDARD MODEL PRICE***

- Terraces or other outside structures
- Interior or exterior finishings not according to the General Specifications and Standard Model Definitions.

*** Pricing provided upon request